



## INSIDE THIS ISSUE

- MS Windows 10 is HERE! ..... 1
- Startup Vikes @ Cleveland State ... 2
- How Much Is That Software in the Window?? ..... 3
- Student Computer Labs..... 3
- SAS & SPSS Renewals ..... 3
- Sustainability in Computing ..... 4

News from Cleveland State University Information Services & Technology

## REFURBISHED COMPUTERS

Many people were grabbing old computers sent to Property Control as a cost reduction method for getting a computer for student help, spare units, or to avoid the purchase of a new computer. This was a security issue as the data originally stored on the PC was still there, logically secured, but open if the current user requested Administrative Rights. So there were two issues, potential security breaches, and cost savings to the department.

IS&T crafted a solution to solve the security problem while maintaining a reasonable cost savings for the departments. We now will take the used computers from Property Control that have 2-4 more years of life left in them, but are out of the original warranty period.

We will install a new hard drive and will destroy the old hard drive by shredding the entire drive. We will test the machine and bring the RAM memory up to the basic standard for all current computers. The drive will be

*~ continued on page 2*

## MS WINDOWS 10 IS HERE!

Windows 10 is the direction that both Intel and Microsoft want us to follow and it will become a reality this spring term 2017.

### IS&T GENERAL COMPUTER LABS:

We are carefully, conservatively deploying Windows 10 in our labs. In most cases, Windows 10 will be loaded onto 1/2 of all lab machines. That will give students a chance to continue using Windows 7 (for a short while), or Windows 10 in the same lab. By the end of this term, all General Computer labs will be running Windows 10.

### MOBILE CAMPUS

Unfortunately, our popular Apple iPads were retired for security reasons. Replacing them are 15 Apple Air's, 15 Surface Pro 4's, and 15 HP Tablets. All units have built-in keyboards. The non-Apple units are running Windows 10. We will evaluate the need to either convert our existing laptops to Win 10 or replace them with either the Apple, HP or Surface tablets.

### FACULTY AND STAFF USERS

A new processor is soon to arrive on the landscape called "Kaby

Lake" and is intended to run Windows 10 only. We will try to test our Windows 7 image on this platform as a "just in case" approach. In most cases, new units arriving between February 2017 and April 2017 will all be running Win 10.

### NEED WINDOWS 7?

Powerfaids and Onbase thick clients are not certified to run Win 10 and will require a computer with the old processor called "Sky Lake" running Win 7. Likewise, any other user requesting a Win 7 computer, we would do the same. In both cases, there will be an elevated price bump of \$25.

### UPGRADE TO WINDOWS 10?

Any existing computer purchased from October 2016 and on may/ should already have a Win 10 label. If so, the computer could be upgraded to Win 10 for free.

Other users requesting an upgrade to 10 must have their machine evaluated for proper specifications before purchasing a Windows 10 Upgrade License via MagnusMart. Once the license is purchased, we will upgrade your computer.

# STARTUP VIKES @ CLEVELAND STATE

## GENERAL INFORMATION:

Startup Vikes is Cleveland State's startup weekend dedicated to launching new businesses. The event begins with pitches on Friday night and ends with presentations on Sunday. Best of all, the top three startups formed at the weekend are then provided with a prize package and cash infusion to help them launch their business. To date, the annual event has launched 11 businesses, 7 of which have attracted follow-up funding. IS&T is joining the Startup Vikes team by providing mentorship to the teams participating, as well as sponsoring 5 of our own IS&T student workers to participate in the event.

This year, the fourth StartUp Vikes will be February 24th-26th in the Student Center.

## FOR THE STAFF:

Mentors are needed to provide guidance for the teams through the startup weekend and to provide technology expertise.

There are several ways you can be a mentor:

1. Dedicate 3 hours on Saturday or Sunday to hold a booth and help any student team with your experience!
2. Be a dedicated mentor serving the whole weekend for a specific group and see them through their final product.

Best of all, you can earn comp time as a courtesy of the CIO if you choose to volunteer over the weekend! A win-win for all parties involved!

Deadline to volunteer is Thursday, February 16th 2017

To become a mentor, please contact Wesam Helou: [w.helou@csuohio.edu](mailto:w.helou@csuohio.edu) or Katie Van Dyke at: [k.vandyke@csuohio.edu](mailto:k.vandyke@csuohio.edu).

## FOR STUDENTS:

IS&T is sponsoring 5 of the IS&T student workers to participate in this amazing event. Tickets to join StartUp Vikes are \$49.99 for students. Please apply via email to Wesam Helou ([w.helou@csuohio.edu](mailto:w.helou@csuohio.edu)) with a short bio of no more than 500 words explaining why you would like to be chosen to join StartUp Vikes along with your most recent resume.

## DEADLINE TO APPLY

Thursday

February 16th, 2017



## REFURBISHED...continued

imaged with the same software as if a new PC was purchased. The unit will have a sticker placed on it indicating that IS&T will support this unit for an additional 2 years, excluding the cost of any internal components that may need to be replaced.

The cost of the refurbished units are \$150 for a basic unit which includes the upgraded memory and disk drive. User can select to increase their RAM to 8GB for an additional \$50, and may increase their hard drive to 500GB for an additional \$50 as well.

Supplies are limited and please keep in mind these were sent to Property Control because they were no longer considered to be valuable to the department.

Although the cost is low and some component parts are new, there is no guarantee as to how these units will last or perform. The user must accept the risk of failure or additional charges down the road should components fail and need to be replaced.

These units can be ordered from our **Service Catalog** at [easy.csuohio.edu](http://easy.csuohio.edu) and look for...



### USED, Refurbished Desktops Limited Supply

Limited supply, no more than three units per order. Refurbished units are only supported for 2 years from date of purchase, and user will be charged for any parts required after delivery that fail. There are no guarantees with these units. The supplies are limited.

# HOW MUCH IS THAT SOFTWARE IN THE WINDOW??

We can take software pricing for granted, especially when it is provided to us for free. We can lose sight of the true cost of the software when we are either given it on an image or request an installation.

CSU provides educational discounts for a lot of the software that we purchase, and IS&T has negotiated some site licenses where the entire campus (faculty, staff and students) can use the software on campus and in some cases even at home on personal computers. Every license is different and potentially can change from year to year.

Have you ever wondered what the true cost of the software might be if you had to make a retail purchase without the benefit of an educational or site license discount? IS&T has

purchased several discounted license agreements covering a large, if not entire portion, of the CSU user community and pays for these licenses on an annual basis.

But to get to the true issue, the retail cost of a single license, consider:

- ✓ **SAS retails for: \$8700**
- ✓ **MS Office Professional retail: \$399**
- ✓ **SPSS retail price is: \$125**
- ✓ **Matlab retail price is: \$150**
- ✓ **Each additional toolbox: \$45**

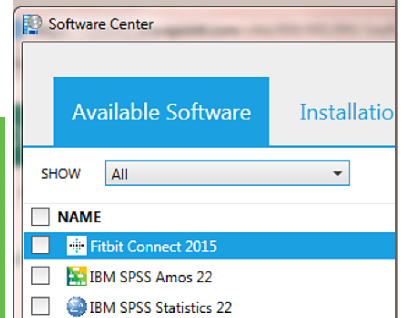
Summing this all up, an academic or research computer system may have slightly over \$9,400 worth of software installed if a CSU faculty or staff member loads all of the products listed above.

## SAS & SPSS RENEWALS

Need a new version of SAS? Is it time to renew the license on SPSS? Save time – and the call to the IS&T Help Desk – and try this DIY solution!

1. Start > All programs (Win 7) or All Apps (Win 10)
2. Click on Microsoft System Center R2 2012. (Note the R2 2012 will change in time to newer releases).
3. Click on Configuration Manager, then Software Center.

You will see...



Check the box next to the item to install and click the **Install** button in the bottom right hand corner. The software selected will be “silently installed” without disruption to your computer.

This is Windows only but is “coming soon” for Macs.

There may also be Windows patches listed here but do not install them. Use this only for SPSS or SAS programs.

## STUDENT COMPUTER LABS

IS&T has 5 general computer labs across campus which are fully staffed with knowledgeable employees who can assist with a variety of computer related questions. We also provide staff for the Library Learning Commons area of the Michael Schwartz Library on the 1st floor of Rhodes Tower.

We provide customer service from 7:30am – 10:00pm for most of our labs.

Our knowledgeable staff provides a positive & friendly atmosphere for all of our users.

We have upgraded some of our labs to Windows 10. You may use Windows 10 in the following labs:

Main Classroom, Business 23 & Urban 39.

Windows 10 coming soon in the following labs: Library 1st floor Learning Commons, Fenn Tower 103, Student Center 126 & Urban 40.

IS&T labs provide a variety of software for our users, there are posters in each lab that lists available software.

There are 2 new scanners for our users: Business 23 and Student Center 126.

Remember we have Visix Display Units that display important information from lab hours to closings and current weather conditions.



## Sleep Mode & Power Management

CSU computers come with a sleep mode or power management feature. ENERGY STAR® estimates that using these features will save up to \$30 each year on electricity. IS&T installs and configures the power-down feature on all CSU owned PCs. PLEASE: do not disable this system and nullify its savings benefits.

ENERGY STAR monitors consume 2 watts or less in sleep mode. CSU owned monitors will automatically go into sleep mode after a period of inactivity. You can save even more by manually turning off your monitor when you're not using it; ENERGY STAR qualified monitors consume 1 watt or less when off.

Screen savers are not meant to be energy savers. In fact, modern LCD color monitors do not need screen savers at all.

### TURN OFF THE MONITOR

if not using the PC for more than 20 minutes.

### TURN OFF CPU & MONITOR

if not using the PC for more than 2 hours.

U.S. Dept of Energy,  
<http://tinyurl.com/z7njtvo>

# SUSTAINABILITY IN COMPUTING

At CSU we are working to reduce our carbon footprint and one way to do that is through adopting greener ICT practices. Between sourcing materials and the energy requirements of PCs, monitors, data centers and telecommunications, the impact of ICT on global carbon

emissions is significant.

Don't let anyone tell you that leaving lights, computers, and other appliances on uses less energy than turning them off or that it makes them last longer. In reality, the small surge of power created when devices

are turned on is vastly smaller than the energy used by running the device when it is not needed.

Thanks for helping us to reduce our energy consumption and lower our emissions!

*Jenn McMillin*  
*Director of Sustainability*

## SUSTAINABILITY STRATEGIES

### Minimize environmental impact

- ✓ All computers and monitors purchased are Energy Star® rated.
- ✓ The size of our data center has been optimized which means we're using less energy for computing and cooling server rooms.
- ✓ We've launched a program offering refurbished computers to the university.
- ✓ All e-waste is sent for recycling.
- ✓ Teleconferencing facilities are available to faculty and staff.

### Increase computing efficiency

- ✓ Ensure sleep settings are enabled on your computer. Look for an IS&T email with instructions coming soon!
- ✓ Turn your computer off overnight and over weekends and holidays.
- ✓ Switch off your monitor when stepping out for coffee or meetings.
- ✓ Switch off speakers and other peripherals when not in use.
- ✓ Use shared multi-function printers.

