



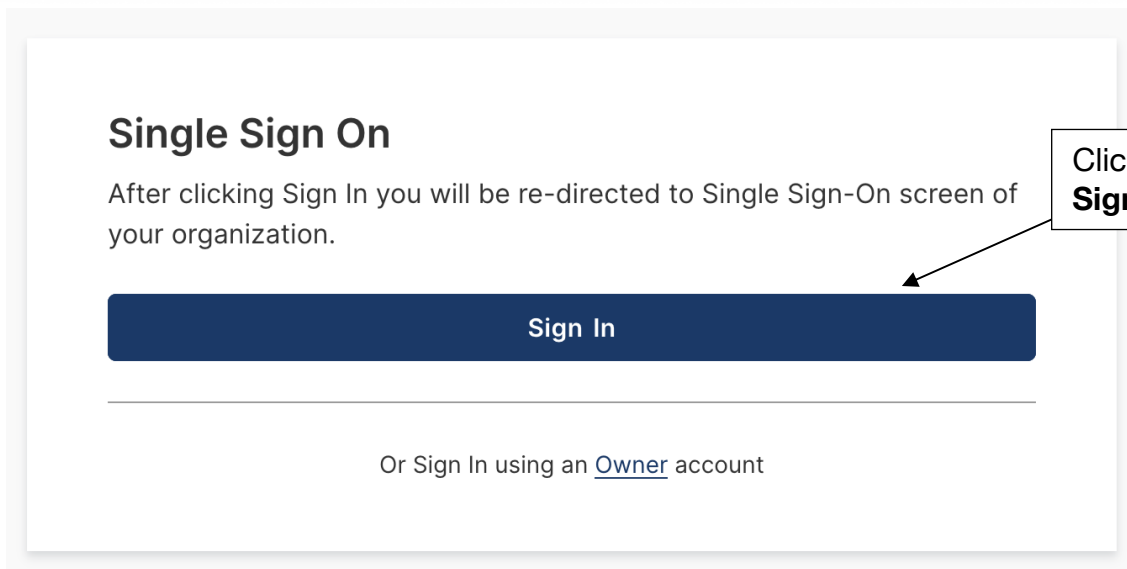
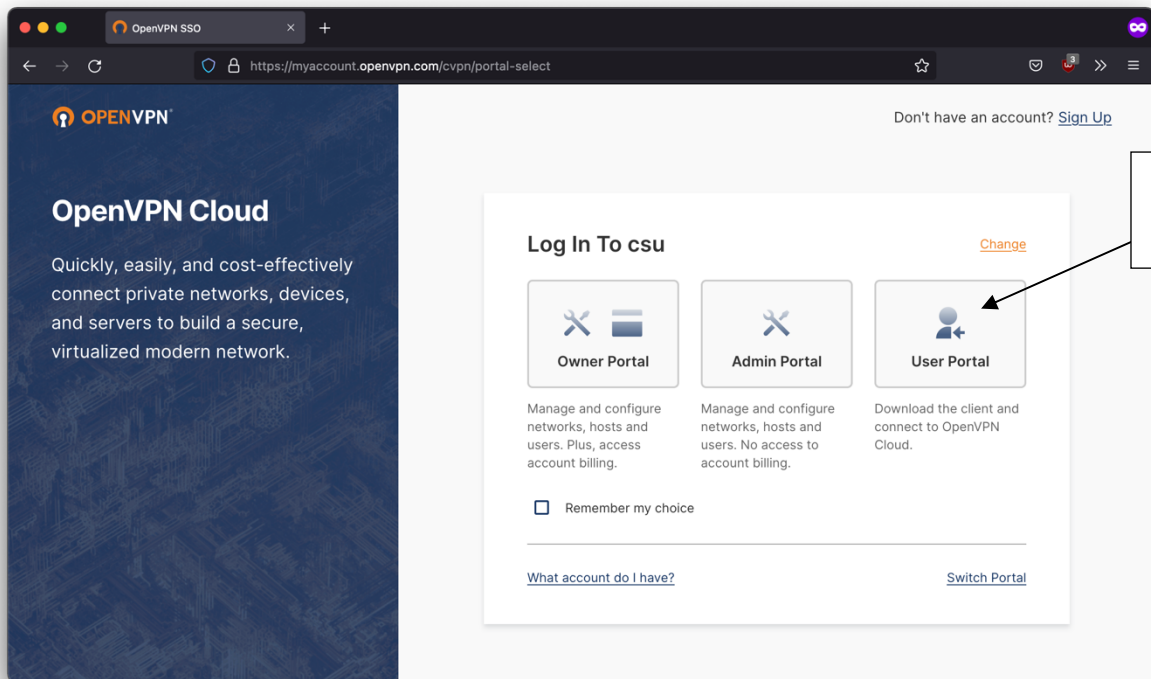
Student VPN Client Installation

12/20/2020

Step 1

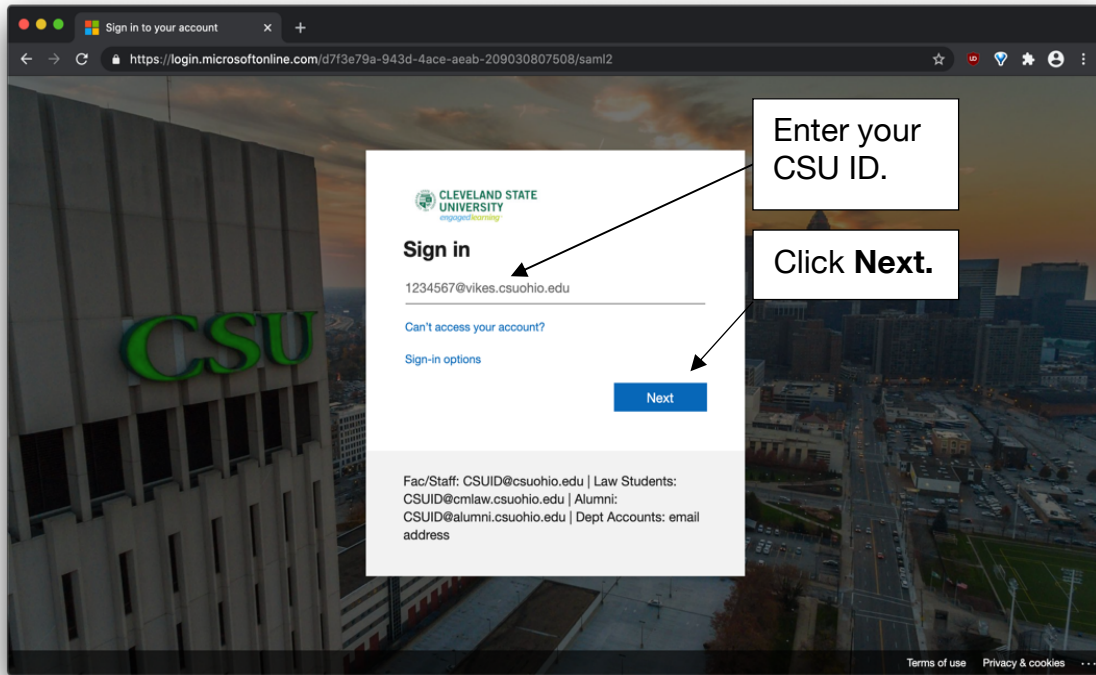
To install the OpenVPN client, on the computer you will be using to remotely connect to the CSU Campus Network (usually your home computer), open a web browser and go to <https://csu.openvpn.com/>

Click **User Portal**, then click **Sign In**.



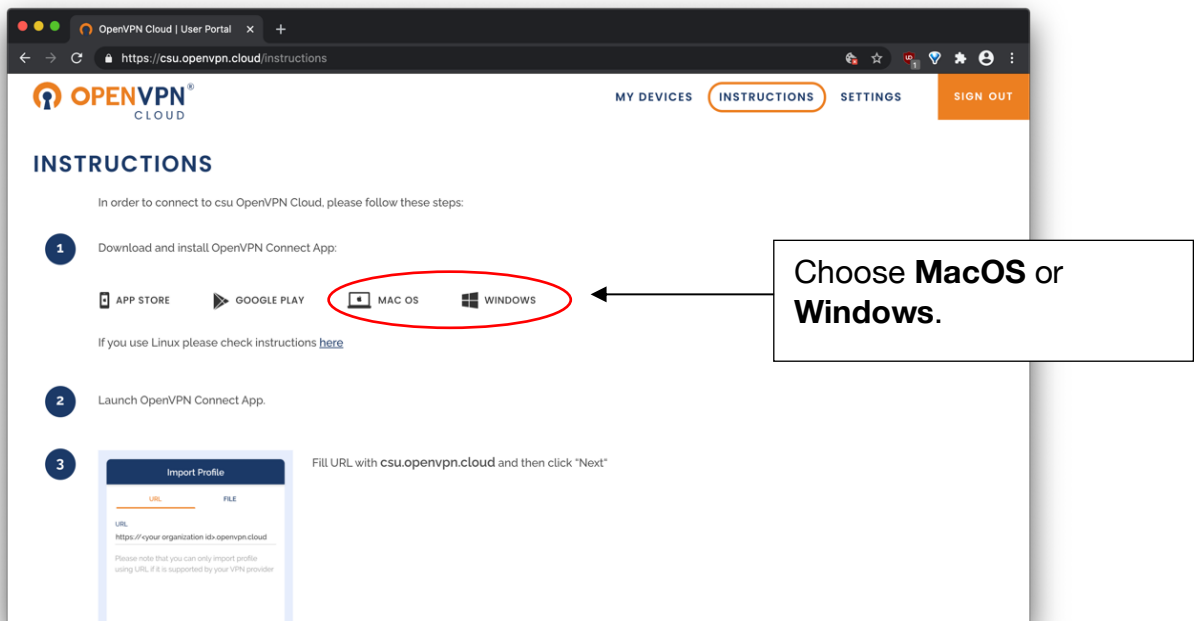


Enter your 7-digit CSU ID number followed by @vikes.csuohio.edu, then click Next. On the following screen, enter your password in the 'Password' field and click **Sign In**.



Step 2

After signing in, download the installer for your operating system by clicking on **MacOS** or **Windows**. Linux users should follow the instructions [here](#).





Step 3

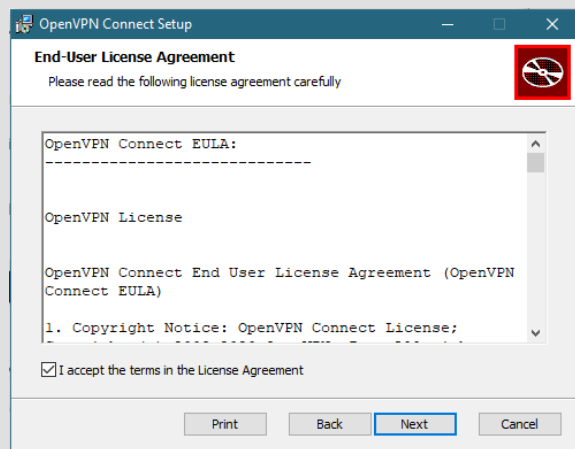
After OpenVPN Connect has downloaded, launch the installer:

For Windows:

Open **File Explorer**.
Browse to **This PC > Downloads**.
Double-click on the OpenVPN Connect
Installer EXE file.



Click **Next**.



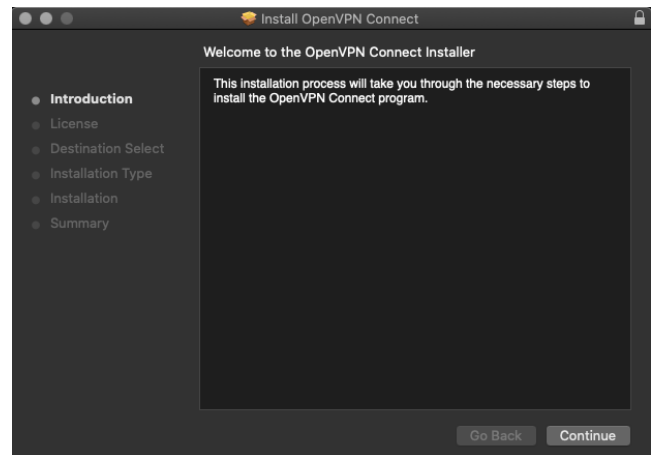
Read and accept the terms in the End-User
License Agreement.

Click **Next**.

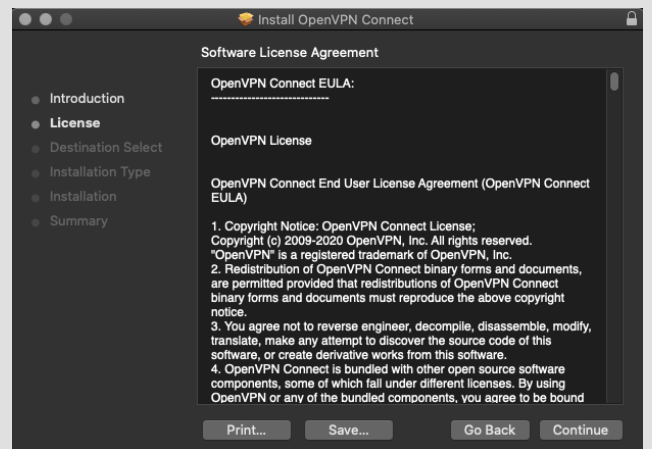
For MacOS:



Open the OpenVPN Connect Installer DMG and
launch the OpenVPN Connect Installer PKG file.



Click **Continue**.

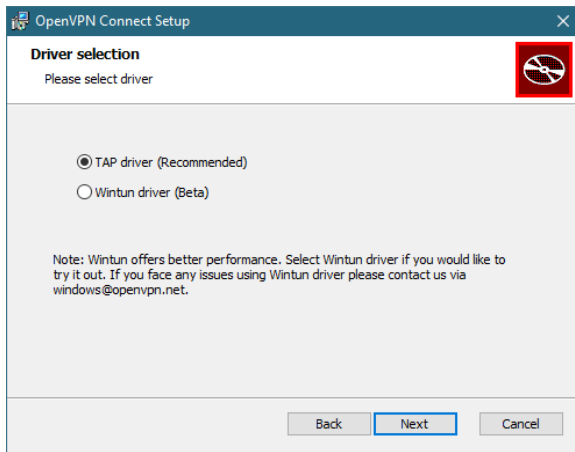


Read and accept the terms in the End-User
License Agreement.

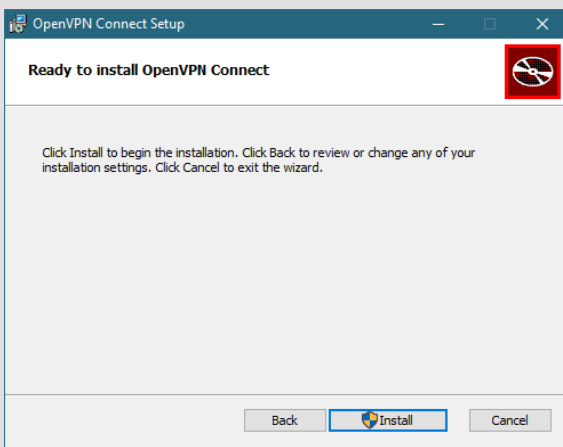
Click **Continue**, then **Agree**.



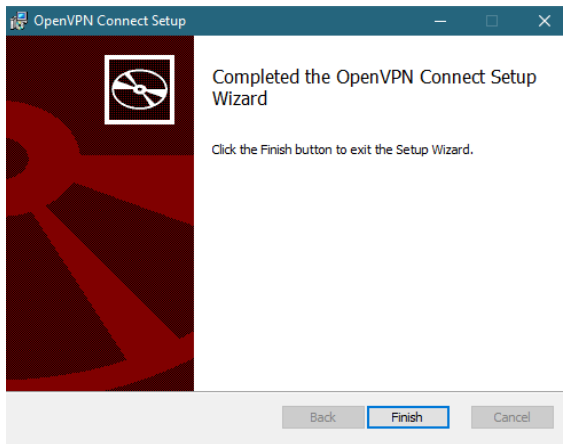
Windows:



Keep TAP driver selected and click **Next**.

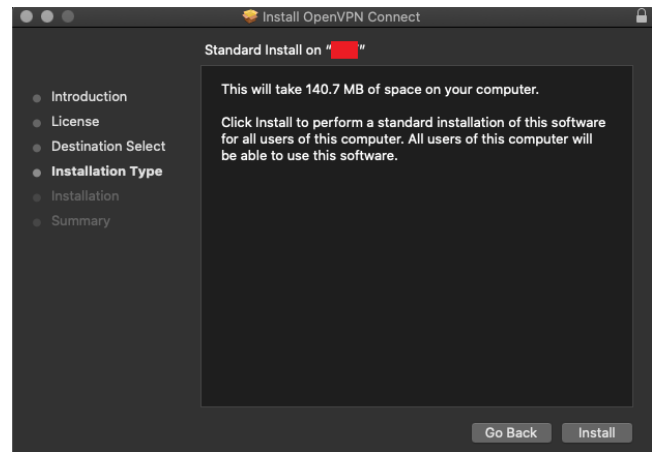


Click **Install**.

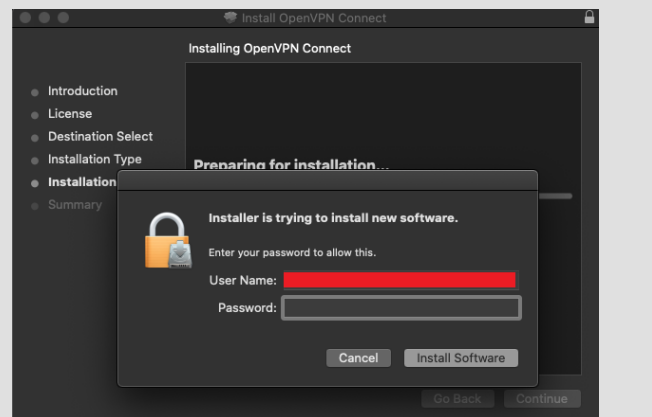


Click **Finish** to exit the setup wizard.

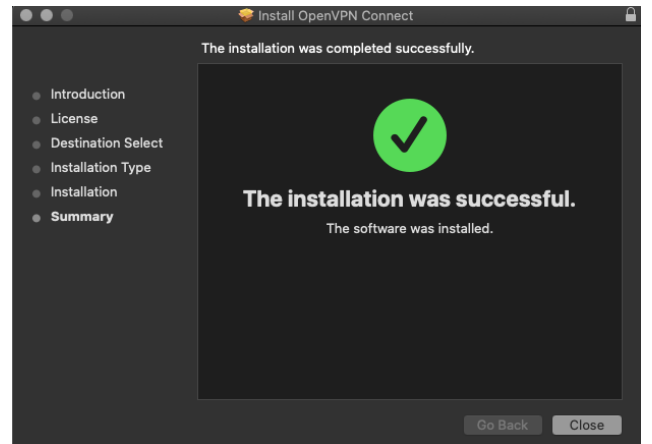
MacOS:



Click **Install**.



Type your user password, then click **Install Software**.



Click **Close** to exit the setup wizard.



Step 4

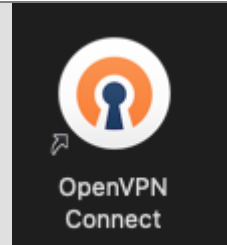
After OpenVPN Connect has been installed, launch OpenVPN Connect:

Windows:



Double-click the desktop shortcut created by the installer to launch the OpenVPN Connect app and continue setup.

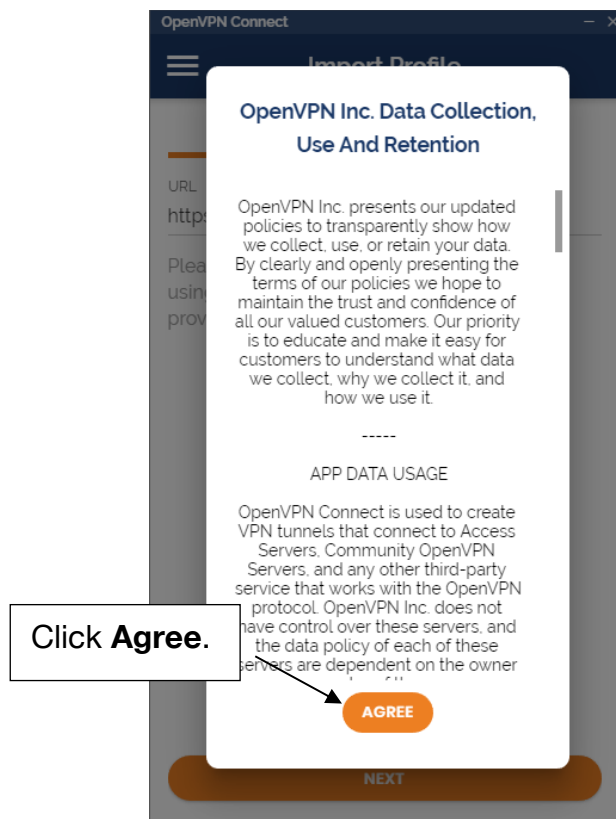
MacOS:



Go to **Finder > Applications** to launch the OpenVPN Connect app and continue setup.

Step 5

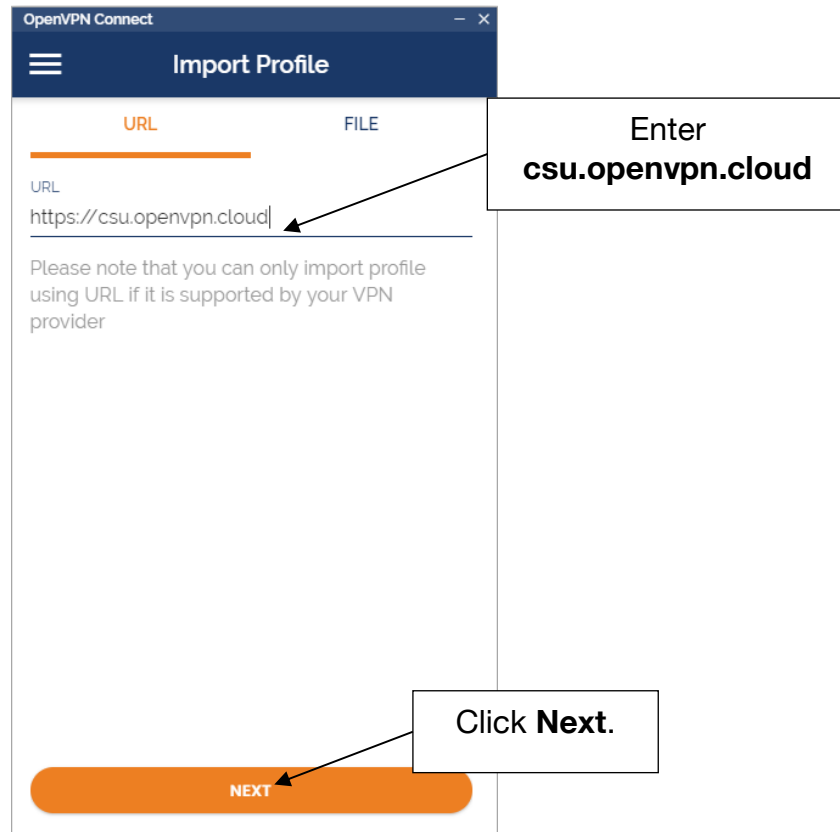
Read the Data Collection, Use, and Retention policy and click **Agree**:





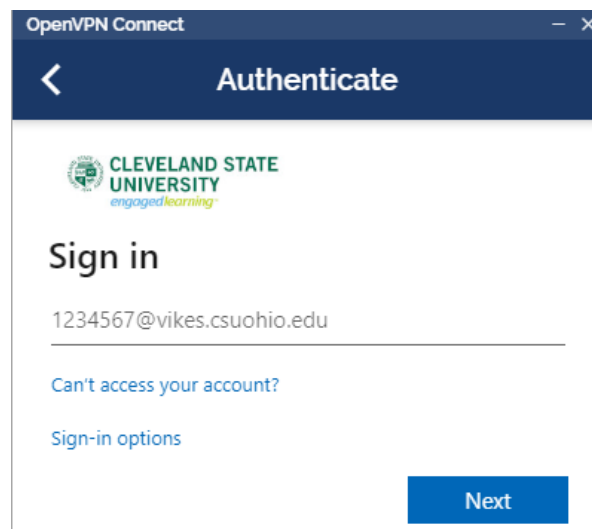
Step 7

Import your OpenVPN profile by entering `https://csu.openvpn.cloud` in the URL field. Then, click Next.



Step 8

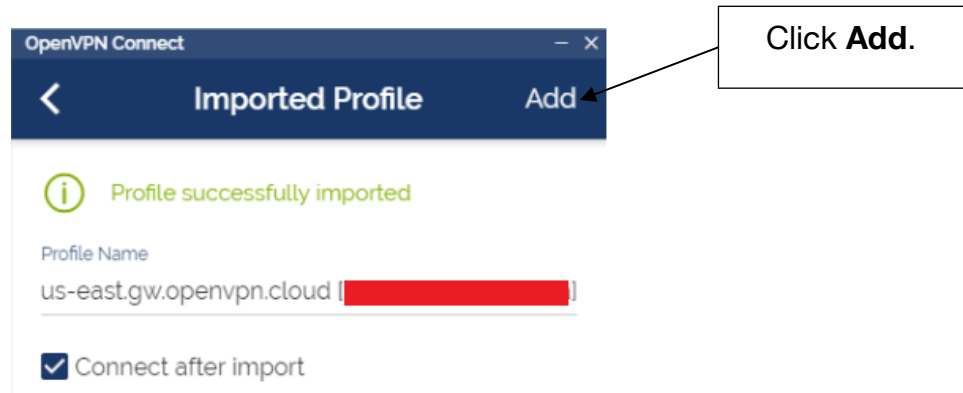
Sign in with your `CSUID@vikes.csuohio.edu` username and CampusNet password:





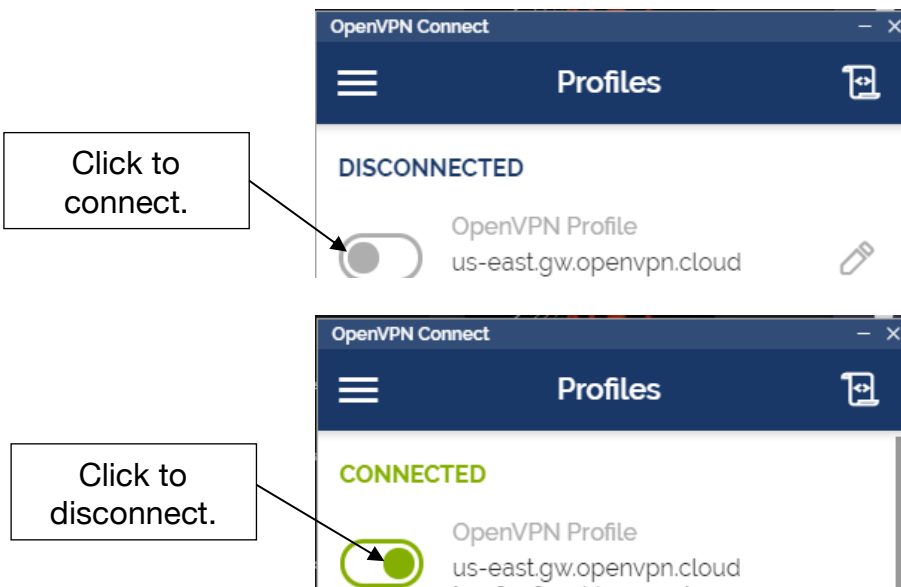
Step 9

If you wish to immediately connect to VPN, select **Connect after import**, then click **Add** in the top right corner:



Step 10

Click the switch at the top of the application window to connect to or disconnect from OpenVPN:



Once connected to the VPN, you will be able to remotely access select resources made available by faculty members. If the resource you need is not reachable once connected to the VPN, please contact the faculty member who instructed you to use the VPN.

If you have any problems during the installation the VPN client, please contact the IS&T Help Desk at 216.687.5050, or by opening a ticket at <https://easy.csuohio.edu>.